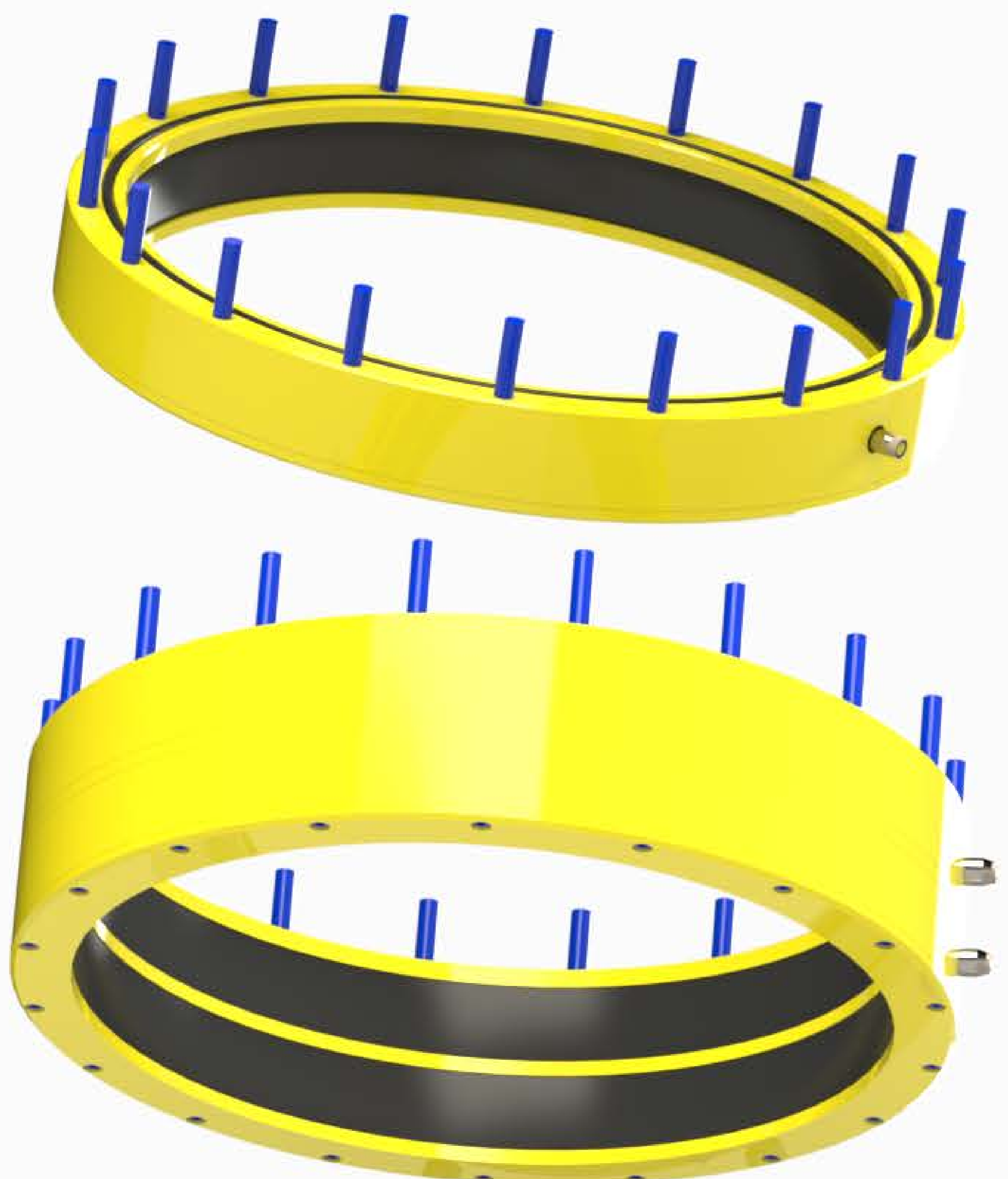


SEALFAST® CARTRIDGE INFLATABLE SEALS

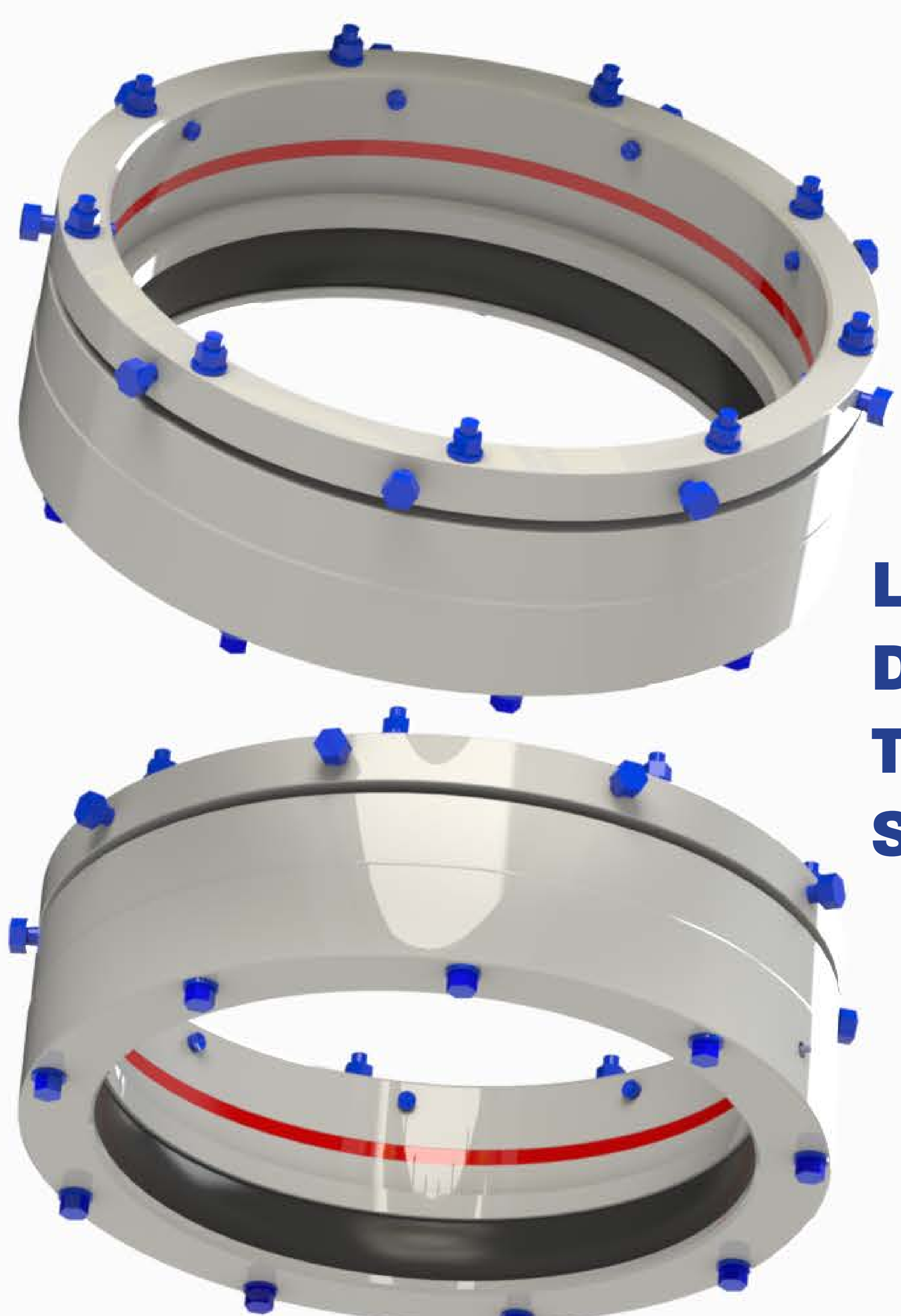
EASY TO ADAPT OIL & GAS SEAL HOUSINGS



**WELD-ON
STYLE SEAL
HOUSING**



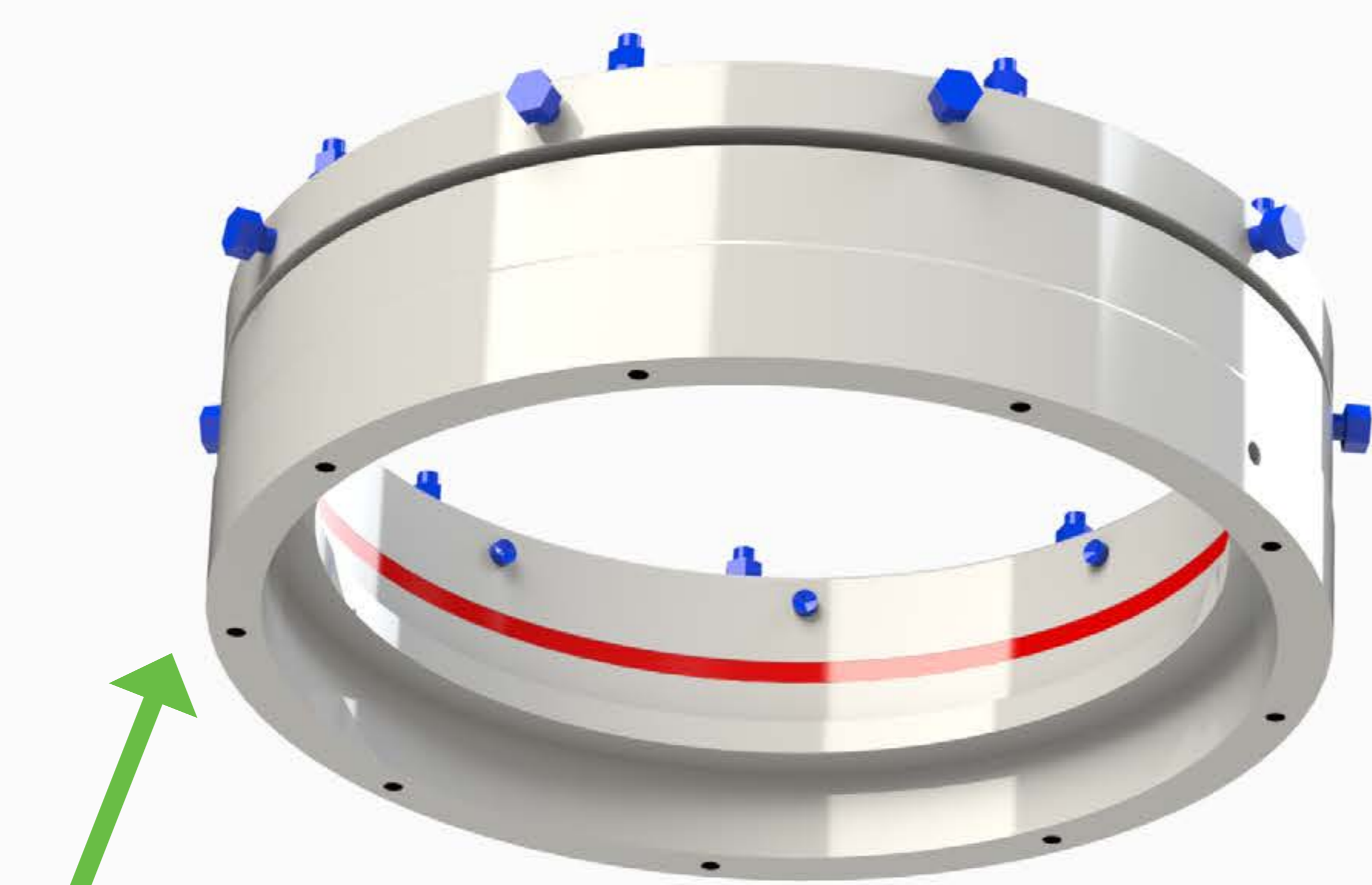
**BOLT TO
FLANGE
STYLE SEAL
HOUSING**



**LOCKING DOG -
DIRECT MOUNT
TO PIPE STYLE
SEAL HOUSING**

MOUNT TYPES OF INFLATABLE CARTRIDGE SEAL HOUSINGS...

RAPID SEAL CHANGEOUT...



UPPER CARTRIDGE HOUSING

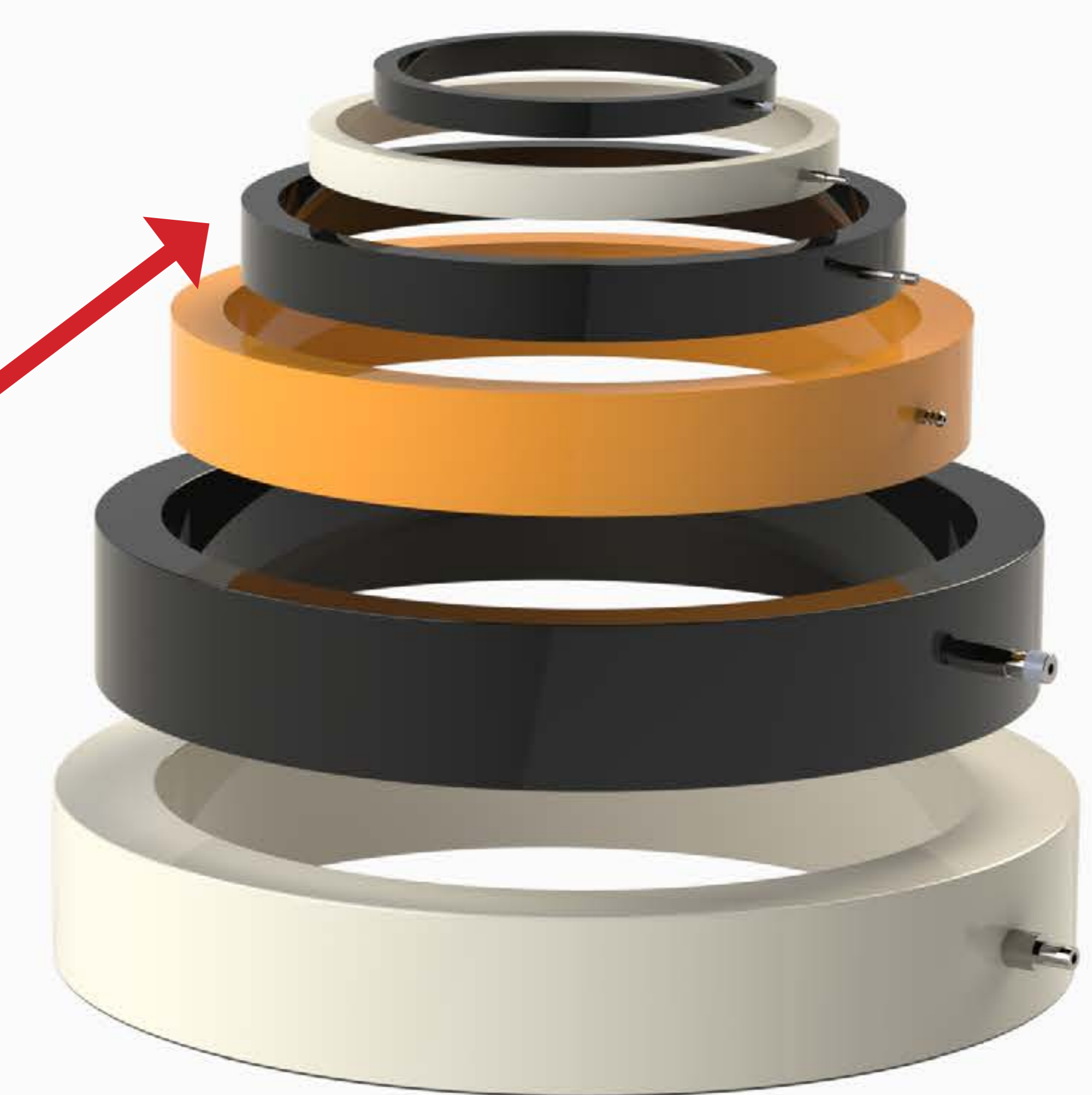


SEALFAST® CARTRIDGE
INFLATABLE SEAL



REMOVE LOWER RETAINER
PLATE TO REMOVE SEAL

SEALFAST® INFLATABLE SEALS...



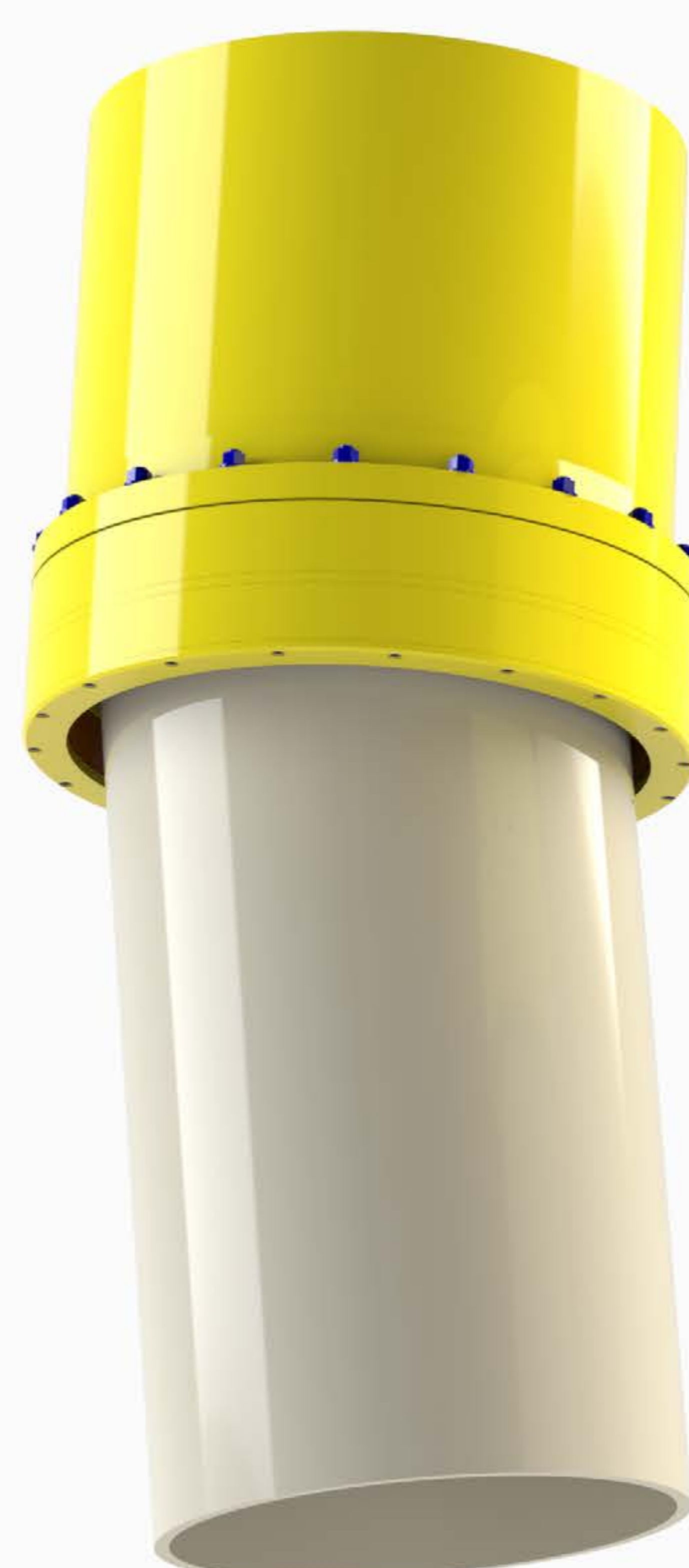
24" DIAMETER
SEAL SHOWN TO
SCALE

DEFLATED

INFLATED

SMALL TO LARGE SIZES,
MOST MATERIALS IN STOCK

ADVANTAGES OF SEALFAST® INFLATABLE CARTRIDGE SEALS... BOLT TO FLANGE STYLE SHOWN



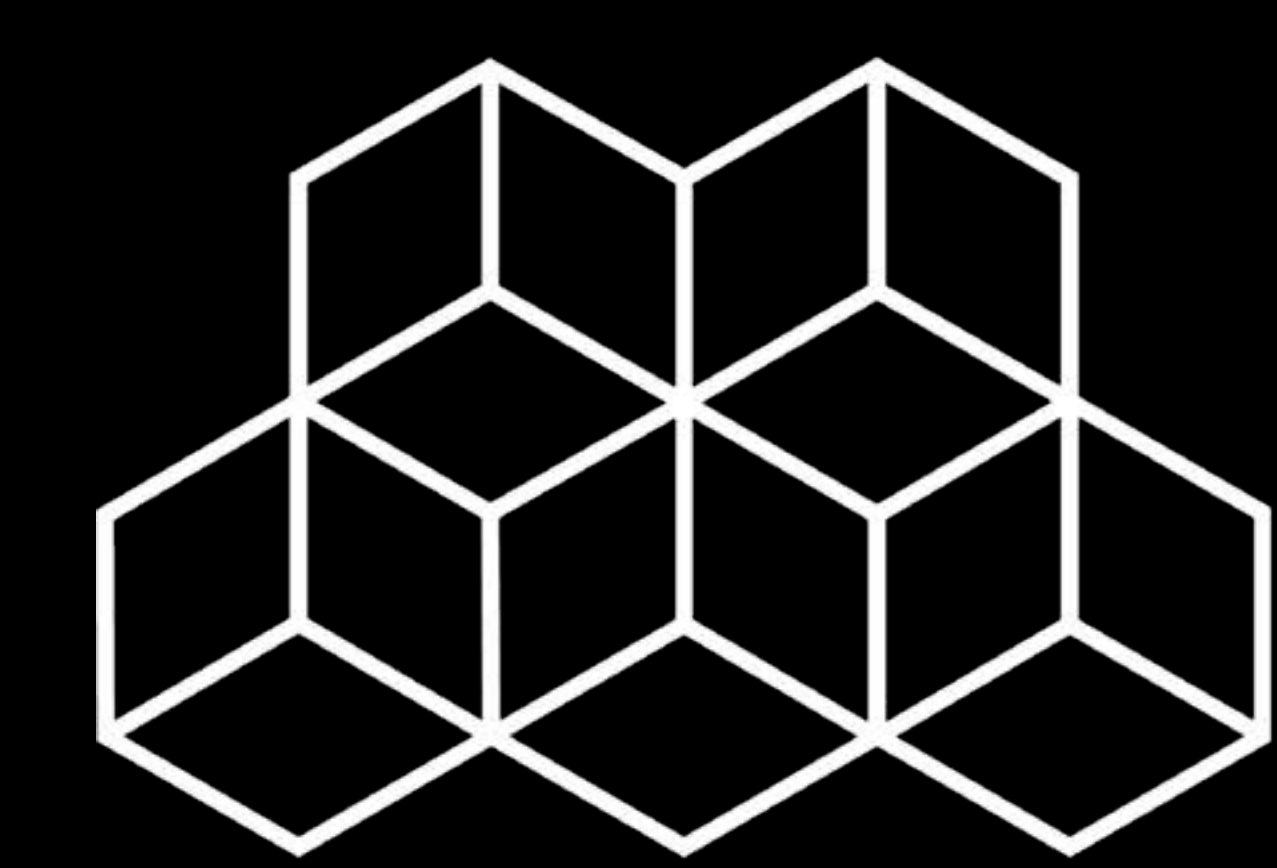
ALLOW LARGE
MISALIGNMENT
AND ECCENTRICITY IN
SEALING PIPE
CONNECTIONS



ALLOW LARGE STATIC
ADJUSTMENT AND
DYNAMIC MOVEMENT
WHILE INFLATED - SLIP
JOINT

OTHER NOTABLE FEATURES...

- API® 6A, 16A, 16F, 64 DRILL THRU AND WELL CONTROL DESIGNS.
- SIZES FROM 1/2" THRU OVER 20 FEET DIAMETER.
- DESIGN PRESSURES FROM LOW PRESSURE THROUGH OVER 5000 PSI.
- SEALS ON NEARLY ANY CONDITION PIPE.
- SINGLE OR MULTIPLE SEAL DESIGNS AVAILABLE FOR REDUNDANCY.



**Mechanical
Research &
Design, Inc.**

**SEALFAST®
PRODUCTS**

